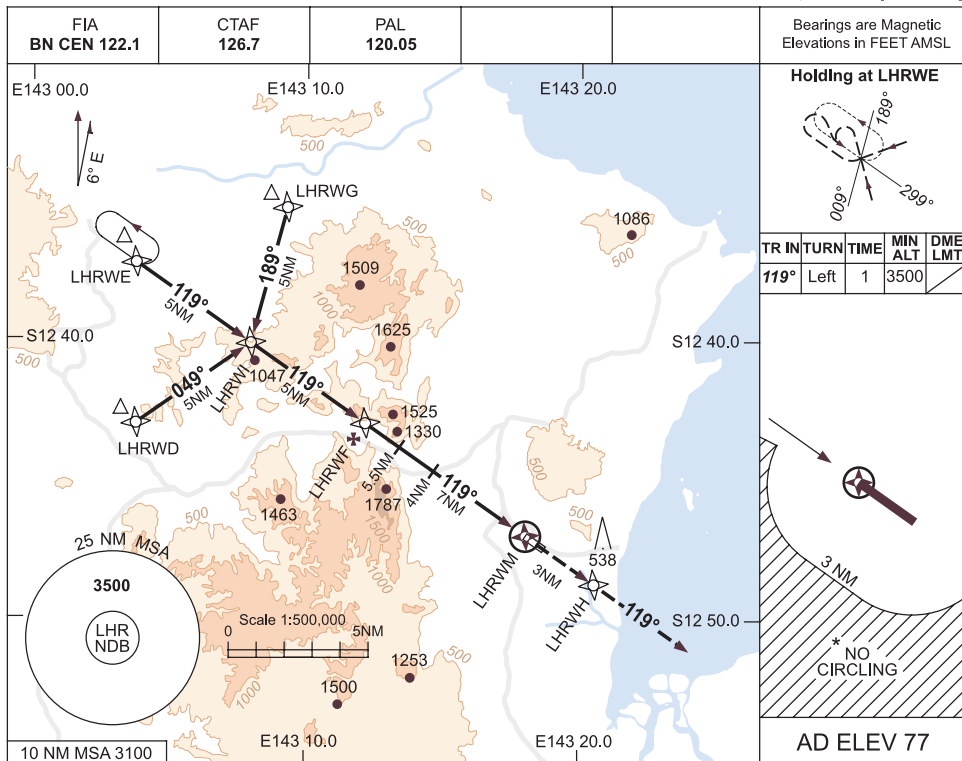


USE QNH

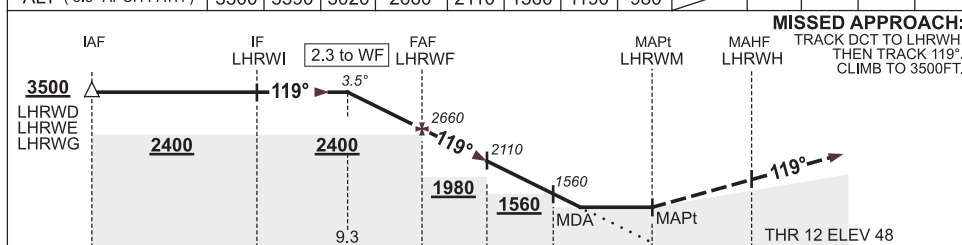
RNAV<sub>(GNSS)</sub> RWY 12

**LOCKHART RIVER, QLD (YLHR)**

19 NOV 2009



NM TO NEXT WPT	2.3	2	1	LHRWF	5.5	4	3	2.4	LHRWM			
ALT (3.5° APCH PATH)	3500	3390	3020	2660	2110	1560	1190	980				



NM FM MAPt	17	12	9.3	7	5.5	4	0	3
Gnd speed-Kts	70	90	100	120	140	160		
Rate of Descent	430	550	610	730	850	970		

CATEGORY	A	B	C	D
S-I GNSS	<b>980 (932-5.0)</b>			<b>NOT APPLICABLE</b>
CIRCLING *	<b>1160 (1083-2.4)</b>		<b>1390 (1313-4.0)</b>	
ALTERNATE	(1583-4.4)		(1813-6.0)	

- NOTES**
1. MAX IAS:  
INITIAL : 210KT.
  - \*2. NO CIRCLING  
BEYOND 3NM STH  
OF RWY 12/30.
  3. AWIS (PHONE)  
07 4060 7006
  4. COLOUR VERSION  
OF THIS MAP IS AVBL  
FM [www.airservicesaustralia.com/publications](http://www.airservicesaustralia.com/publications)

Changes: REVISED PROC.

LHRGN01-121